

# LANDSCAPE DESIGN STATEMENT

## CARDIFF PARK AND RIDE EAST

Llanrumney

CURTIS HALL LIMITED



**Barry Chinn Associated Limited**  
Harbury Road, Deppers Bridge  
Southam, Warwickshire, CV47 2SZ

Reference:	2190/21/RP01
Date:	23-08-22
Author:	HC
Checked:	MB

## **1.0 Generally**

The soft landscape strategy for the proposed development is shown on Barry Chinn Associates drawing no. 2190/21-01 Rev P5 'Indicative Landscape Strategy Plan'.

## **2.0 Landscape Design Objectives**

The landscape design for the development has been guided by the design objectives set out below to ensure the scheme provides significant benefit to the environment and that the new development integrates within its location. The design objectives are:

- a) Maintain and enhance wildlife corridors around the development Site linking into the established corridors/GI assets in the wider environment;
- b) Minimise any potential landscape or visual effects through the application of best practice design principles and careful attention to design throughout all stages of the development process;
- c) to enhance the amenity value of the Site and provide an attractive and welcoming environment sympathetic with the existing landscape character of the area;
- d) Create a high quality and robust new landscape framework including woodland and structure planting to maximise bio diversity gain and provide areas for habitat creation;
- e) Ensure the successful establishment and retention of the landscape scheme and effective landscape buffer planting, particularly along the boundaries of the Site to provide an attractive setting and backdrop for the development.
- f) To retain and protect the existing trees and hedges except those to be removed to facilitate the development. All retained features are to be managed in accordance with the Woodland Management Plan prepared by AT Coombes Associates.
- g) Improve pedestrian access around and through the Site into the wider setting.

## **3.0 Existing Features**

An Arboricultural Survey for the application Site was carried out in July 2021 by Delta- Simons Environmental Consultants Ltd. The survey describes the application Site as “an expanse of broadleaved semi-natural woodland with large areas of dense scrub and bracken”... “Poor semi-improved grassland was present in the eastern, southern and northern areas of the application Site”. A number of species have been identified including Ash (*Fraxinus excelsior*), Cherry (*Prunus* sp), Goat willow (*Salix caprea*), London plane (*Platanus x hispanica*), Hawthorn (*Crataegus monogyna*), Sycamore (*Acer pseudoplatanus*), Hazel (*Corylus*

avellana), Common Alder (*Alnus glutinosa*), Apple (*Malus* sp.), Silver Birch (*Betula pendula*), Crack willow (*Salix fragilis*), Field Maple (*Acer campestre*) and Pedunculate Oak (*Quercus robur*).

#### **4.0 Landscape Design Proposals**

The landscape strategy for the Site seeks to retain and enhance as much of the existing established vegetation as possible. This will be achieved through selective management regimes & bolstering of vegetation where required including the provision of mixed species hedgerows around the periphery of the woodland zones. There are several areas of Ancient & mature woodland to the periphery of the Site on all sides, with some additional areas situated the other side of the river channel. The development has been off set from these up to 30m in order to minimise any negative impact on setting and ground conditions.

The zone of existing woodland located along the northern boundary with the A48 is to be retained and managed. This provides a significant level of screening to the development when viewed from the north and west and forms a strong back drop to the development. Along the south-eastern boundary with the river corridor the mature vegetation will be retained. These are an important feature of the landscape and contribute to the setting of the Rhymney Trail and river corridor.

Where vegetation is to be lost across the application Site a compensation package including the replacement of 2.3ha of woodland planting is to be provided off-site. Refer to the Arboricultural report for further details.

In designing the roadside landscape as you enter the Site off the A48, emphasis has been on the retention of the existing frontage trees to serve as a feature while also complimenting to the established landscape character evident across the Site. Additional trees will be planted along the frontage to strengthen and enhance the wooded character. Avenues of large stature trees will be planted along the proposed entry roads which will establish to create a strong 'visual entrance' to the Site while also acting as additional screening & softening of the built development.

Within the frontage landscapes and along the central spine road rain gardens/swales have been proposed to capture & hold surface water run-off, these areas will be planted predominantly with native species to aid habitat creation, biodiversity and ecology within the Site, with some ornamental feature planting in prominent locations to create varied visual interest through the addition of colour. Mown grass zones have been designed to expand out

from the rain gardens meandering around the perimeter of the Site creating a sinuous flowing verge and a clean edge to the footpaths & road-scene.

Internally within the Site/plots, service yards will be screened by mixed native species hedge planting that will be managed to create a high level boundary treatment restricting views into the working areas of the plot whilst also creating a clean visual edge that can be easily maintained.

Within car parking and areas of pedestrian access the approach will be kept reasonably open to provide a 'feel safe' environment. This will assist in security monitoring the areas. The planting to car park edges will comprise of predominantly ornamental groundcover species planted in blocks with specimen shrubs located in prominent locations to create separation & variety in planting height.

Within the wider setting many of the existing formal/informal footpath routes are to be retained and enhanced. This will include surfacing treatments, selective management of site lines to improve forward visibility and prevent over sailing of vegetation and improved way marking.

The proposal will take account of the future maintenance requirements by careful selection of plant species and their relationship, with emphasis on achieving good establishment whilst minimising maintenance costs. Overall the landscape strategy for the Site will integrate the development into its surrounding context, and will provide an attractive and functional working environment.

Ultimately the landscape strategy aims to create a development that sits comfortably within its surroundings and is in keeping with the character of the area. This will help to create a positive relationship between the development and its surrounding environment. It is envisaged that over time the shrub and tree planting proposed for the development will mature to provide an attractive landscape setting, which assimilates the new development into the immediate surroundings. The landscape created will be managed in accordance with sound ecological principles to improve the overall bio-diversity of the Site.

## **6.0 Establishment, Maintenance and Management**

The establishment and future success of the landscape is largely dependent on the standard and frequency of the subsequent maintenance and management it receives. Throughout the development period and thereafter a maintenance and management regime will be adopted

with the following aims and objectives so the landscape develops in a manner commensurate with the original design intentions:

- To ensure the successful establishment and continued growth through to maturity of the woodland edge, trees, shrubs, grassland areas.
- To enhance the biodiversity of the site through careful management of the woodland / thicket, shrub and grass areas;
- To ensure the tree planting establishes as quickly as possible to filter views of the development.
- To secure a long term future for the existing retained trees and hedgerows with particular emphasis on their integration with the new landscape elements.
- To optimise ecological enhancement.
- To manage the landscape in a manner commensurate with the safety of site users by maintaining visibility splays, maintaining good surveillance, the removing of dead, dying or diseased branches, etc.;

The soft landscape will, for the initial 1 year period after Practical Completion be maintained by the Landscape Contractor responsible for implementation of the works. The contract will include a defects liability clause to ensure replacement planting is carried out and successful establishment achieved. Thereafter, maintenance contracts will be organised by the persons responsible for facilities management at intervals to be determined to achieve continuity.

## **7.0 Conclusion**

Ultimately the landscape strategy aims to create a development that sits comfortably within its surroundings and is in keeping with the character of the area. This will help to create a positive relationship between the development and its surrounding environment. It is envisaged that over time the shrub and tree planting proposed for the development will mature to provide an attractive landscape setting, which assimilates the new development into the immediate surroundings. The landscape created will be managed in accordance with sound ecological principles to improve the overall bio-diversity of the site.

## **8.0 Tree Protection**

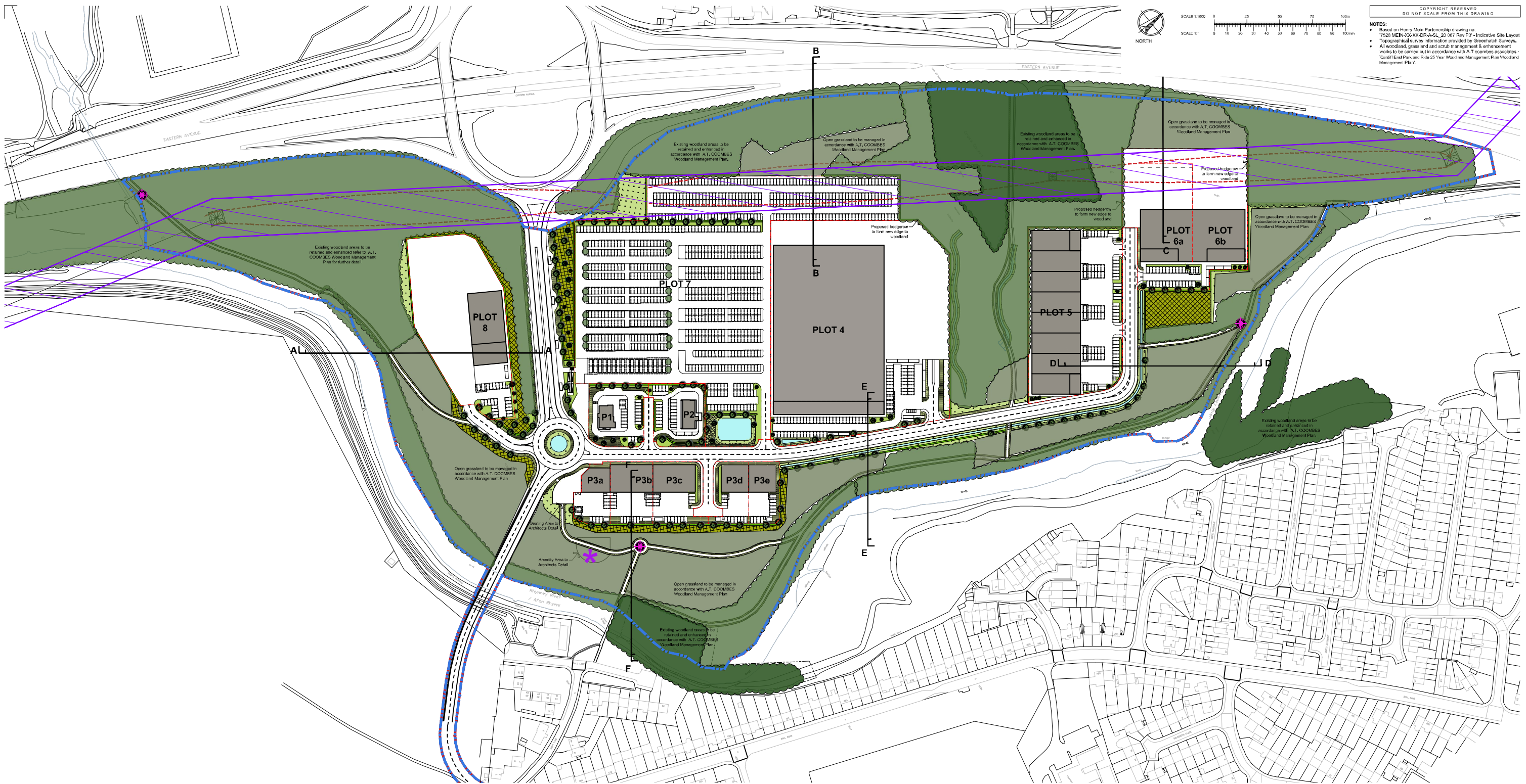
Where existing trees and hedges are to be retained they will be protected in accordance with BS 5837:2012 – Trees in relation to design, demolition and construction – Recommendations. The protective fence will be fixed prior to commencement of the works and retained throughout the construction phase of the development.

## **9.0 Supporting Documentation**

The following documentation is submitted in support of the landscape proposals for the development:

Barry Chinn Associates Drawings and Documents:

2190/21-01 Rev P5          'Indicative Landscape Strategy Plan'



COPYRIGHT RESERVED  
DO NOT SCALE FROM THIS DRAWING

NOTES:  
 • Based on Henry Mann Partnership drawing no. 17528 MEN/2003X-CR-A-SL\_20/07 Rev P3 - Indicative Site Layout  
 • Topographical survey information provided by Greenhatch Surveys.  
 • All woodland, grassland and scrub management & enhancement works to be carried out in accordance with A.T. COOMBS associates - Cardiff East Park and Ride 25 Year Woodland Management Plan Woodland Management Plan.

**KEY**

- ANCIENT WOODLAND**  
Refer to A.T. COOMBS ASSOCIATES LTD Woodland Management Plan for further detail of existing vegetation & management strategy.
- ANCIENT WOODLAND**  
Refer to A.T. COOMBS ASSOCIATES LTD Woodland Management Plan for further detail of existing vegetation & management strategy.
- ANCIENT WOODLAND**  
Refer to A.T. COOMBS ASSOCIATES LTD Woodland Management Plan for further detail of existing vegetation & management strategy.
- EXTRA HEAVY STANDARD TREES**  
(Tree pit size: 1500x1000x900mm)  
16.00m stem girth  
4.60m height  
1.8-2.1m clear stem  
Root ball
- MULTI-STEM TREES**  
(Tree pit size: 1000x1000x750mm)  
2.0-2.5m height  
3x transplanted  
Root ball
- CONIFEROUS TREES**  
(Tree pit size: 1000x1000x750mm)  
2.0-2.5m height  
4x transplanted  
Root ball
- FEATHERED TREES**  
1.75-2.0m height  
2x transplanted  
Vial furnished with lateral shoots to base  
Root wrapage
- SPECIMEN SHRUBS**  
(300mm depth of fossil + maximum 200mm depth subsoil)
- THICKET (WOODLAND EDGE) MIX PLANTING**  
(150mm depth of fossil + maximum 600mm depth subsoil)  
Where woodland or thicket is planted next to a hard surface/embankment, it should be positioned 1m from the edge. Whips/transplants planted in groups of 3/3 of the same species on a 1.0m grid.
- | %  | Species            | Common Name | Size      | Age | Stock Pot Size |
|----|--------------------|-------------|-----------|-----|----------------|
| 10 | Cornus sanguinea   | Dogwood     | 800-800mm | 141 | OG             |
| 20 | Corylus avellana   | Hazel       | 800-800mm | 142 | OG             |
| 10 | Crataegus monogyna | Hawthorn    | 800-800mm | 141 | OG             |
| 10 | Eucryphia europaea | Spindle     | 800-800mm | 142 | OG             |
| 5  | Ilex aquifolium    | Holly       | 400-400mm | 3L  | OG             |
| 15 | Ligustrum vulgare  | Privet      | 800-800mm | 02  | OG             |
| 10 | Prunus spinosa     | Blackthorn  | 800-800mm | 141 | OG             |
| 10 | Rosa canina        | Dog Rose    | 800-800mm | 141 | OG             |
| 5  | Sambucus nigra     | Elber       | 800-800mm | 141 | OG             |
| 5  | Viburnum opulus    | Quaker Rose | 800-800mm | 142 | OG             |
- MIXED SPECIES NATIVE HEDGEROW**  
(150mm depth of fossil + maximum 600mm depth subsoil)  
Planted at 450mm centres in a double staggered row. Rows to be 500mm apart
- | %  | Species            | Common Name | Size      | Age | Stock Pot |
|----|--------------------|-------------|-----------|-----|-----------|
| 10 | Acid cepestre      | Field Maple | 800-800mm | 141 | OG        |
| 10 | Cornus betulifolia | Hornbeam    | 800-800mm | 141 | OG        |
| 10 | Cornus sanguinea   | Dogwood     | 800-800mm | 141 | OG        |
| 10 | Corylus avellana   | Hazel       | 800-800mm | 142 | OG        |
| 10 | Crataegus monogyna | Hawthorn    | 800-800mm | 141 | OG        |
| 10 | Ilex aquifolium    | Holly       | 400-400mm | 3L  | OG        |
| 10 | Ligustrum vulgare  | Privet      | 800-800mm | 02  | OG        |
| 10 | Prunus spinosa     | Blackthorn  | 800-800mm | 141 | OG        |
| 10 | Rosa canina        | Dog Rose    | 800-800mm | 141 | OG        |
| 10 | Viburnum opulus    | Quaker Rose | 800-800mm | 142 | OG        |
- TALL ORNAMENTAL SHRUB PLANTING**  
(150mm depth of fossil + maximum 300mm depth subsoil)
- LOW ORNAMENTAL SHRUB/BERBERACEOUS PLANTING**  
(150mm depth of fossil + maximum 300mm depth subsoil)
- SPECIMEN SHRUBS**  
(300mm depth of fossil + maximum 200mm depth subsoil)
- CLOSE MOWN GRASS SEEDBED AREAS**  
(150mm depth of fossil + maximum 150mm depth subsoil)  
To be sown with ELLIOTT'S 125 'Blagayard' or similar approved  
Sown at a rate of 35-50g/m<sup>2</sup>

- SPECIES RICH GRASSLAND AREAS**  
(150mm depth of fossil + maximum 150mm depth subsoil)  
To be sown with ELLIOTT'S 125 'Blagayard' or similar approved  
Sown at a rate of 35-50g/m<sup>2</sup>
- WET GRASSLAND SEEDBED AREAS**  
(Calculated subsoil to a depth of 300mm)  
To be sown with ELLIOTT'S 125 'Blagayard' or similar approved  
Sown at a rate of 4 g/m<sup>2</sup>
- SWALES & BASINS**  
Profiles & locations all to Engineers Specification
- INVERTED PUBLIC RIGHT OF WAY**  
Existing route to be altered & diverted around development proposals.
- RHYTHMIC TRAIL**  
Existing route turning along the watercourse & access to the residential areas east of the river.
- EXISTING PUBLIC RIGHT OF WAY TO BE RETAINED**  
Existing route linking back to Rhythmic Trail to be retained & surfaces made good where required. Signage and exit steps to be added in various locations along the route.
- INFORMAL CYCLE/WALKING ROUTES**  
Proposed 3m pathway turning east-west through woodland areas creating area to the west of the site.
- AMENITY ZONE**  
To Architects Specification
- PLACEMAKING**  
Where existing & proposed pathways join, signage, seating and waymarking will be provided to create junctions & memorable locations along the route.
- OVERHEAD POWER CABLES**
- SECTION LINES**  
Refer to BCA drawing no. 2190-21-02 for 'Illustrative Landscape Sections'
- SITE BOUNDARY**
- PLOT BOUNDARIES**

PS	Design & brief offered to suit revised Architectural layout.	JAC	MB	16-05-22
PA	Design & brief offered to suit revised Architectural layout.	JAC	MB	31-05-22
P1	Landscape layout following client comments.	JAC	MB	17-06-22
P2	Landscape layout to reflect latest architectural site plan.	JAC	MB	27-06-22
P3	Final landscape masterplan.	JAC	MB	16-07-22
REV	DESIGN/PA/PS	BY	CAD	DATE

**BCA ASSOCIATES**  
BARRY CHINN  
Landscape Architects

<b>CLIENT</b> CURTIS HALL LIMITED	
<b>PROJECT</b> CURTIS HALL, CARDIFF PARK & RIDE EAST	
<b>DRAWING TITLE</b> INDICATIVE LANDSCAPE STRATEGY PLAN	
CONTRACT NUMBER: 2190-21	DATE: 23-12-21
DRAWING STATUS: PLANNING	CAD REFERENCE: 2190-21-01
DRAWN BY: HC	CHECKED BY: MB
SCALE: 1:1000	ORIGINAL SHEET: A0
PROJECT ORIGINATOR: VOLUME LEVEL, FITS, FOLEY, HANMER	STATUS: REV
<b>CUR BCA ELS XX DR L 2190-21-01 S5 P5</b>	